

Better Homes Makes Manchester A Beautiful Community

HOUSES PLANNED IN GROUP IDEAL FOR SUBURBS

Each Building So Situated As to Provide Separate Gardens for the Tenants.

By GEORGE HOWE.

In a recent article in "The American Mercury," Jacob L. Crane, Jr. says: "The contest for the use of the streets, waged between the conflicting purposes of traffic on the one hand and play, promenade and outlook from the windows on the other, has been clearly won by traffic and the losing side is now looking for accommodations elsewhere than along the streets."

"In response to this new situation, there suggests itself an argument by which the street, passing between the rear ends of reversed houses, will be given over entirely to horseless four-wheelers hauling people and goods directly to the service, entrances, and people and refuse away from them. The sun parlor, facing away from the street, will look out upon either the garden or greensward of a private interior park full of playing children."

The case for the single house and the row of four houses, planned as one group, which I am about to discuss, could not be more succinctly put. The owner of a lot about 175 feet by 150 feet, situated at the corner of two busy main thoroughfares, Germantown Avenue and Chestnut Avenue, in the closely built suburban area of Chestnut Hill, Philadelphia, planned to build a house. On account of the value of the real estate, within a stone's throw of two railroad stations and numerous public garages and shops, yet surrounded on all sides by substantial private residences with gardens on shaded streets, she did not feel she could afford to maintain a large, open area around a modest cottage.

TOWN TOPICS

By Clarence H. Anderson

Play Safe

BET

On a Sure Thing

INSURANCE

of

ALL KINDS

is a safe bet against trouble.

INSURANCE
647 MAIN STREET
CLARENCE H. ANDERSON
TELEPHONE 1336

In consultation with her architect and real estate representative, she planned to develop an entire block on a large part of her property in such a way as to safeguard her own privacy, sunlight and air, as well as the handsome shade trees established on the grounds. As Germantown Avenue was developing in solid city blocks almost to her property line, it seemed logical to establish a solid row of houses along this thoroughfare, not only to make the maximum use of the land, but also to form a screen between her own house and garden, and the dense traffic along the broad avenue.

Having reached independently some conclusions regarding city house planning, as Mr. Crane, the architect laid out all the houses as close to the street as possible, placing the "back," or service entrance, side by side on the street elevations and preserving the major part of the area of the property for yard gardens, facing south, shaded by trees and cut off from the street by the body of the houses themselves.

Inclosure for Each House.
In discussing the question as to whether it would be best to throw the garden area into a common or create a separate inclosure for each house, the latter course was preferred. Had the area been more restricted the common park would perhaps have been preferable, but there seemed to be enough land available to give each house its own garden plot.

In order to provide security for children and animals, as well as to preserve cherished plants from predatory hands, a wall was placed around every yard. Furthermore, in order to allow each house owner access from the adjacent streets to his garden a right of way was dedicated by the original land owner, leading between her yard and those of her chosen neighbors from the north to the south boundary and thence at right angles to the east boundary at Germantown Avenue.

It will be seen from this description that the plan of each individual house was determined by the considerate use of the land, as a whole, and by the landscape plan dictated by it.

An examination of the individual floor plans of the houses under discussion will show the advantages of the group plan. In the case of the row of four houses the main block of each end house, and the united main blocks of the two central houses project beyond the dining room and pantry wings, forming two recessed yards inclosed on three sides by the houses themselves.

The fourth side of each yard is inclosed by a wall built between the projecting main blocks, and pierced by a service gate. Within this yard all the service necessities, wash cans, milk bottles, etc., may be housed. A green terrace shaded by trees may be used as an outdoor sitting room by the domestic staff. There is, so to speak, no "back" to these houses. From both sides they are trim and orderly.

At the other end of each house from the service gate is the entrance door which gives access to a stair hall leading directly to the living room and accessible also from the kitchen. The living room and dining room are on the southwest side of the house, with immediate access to the porch and garden. The porch, placed in the center of the elevation, cuts off no sun from the rooms.

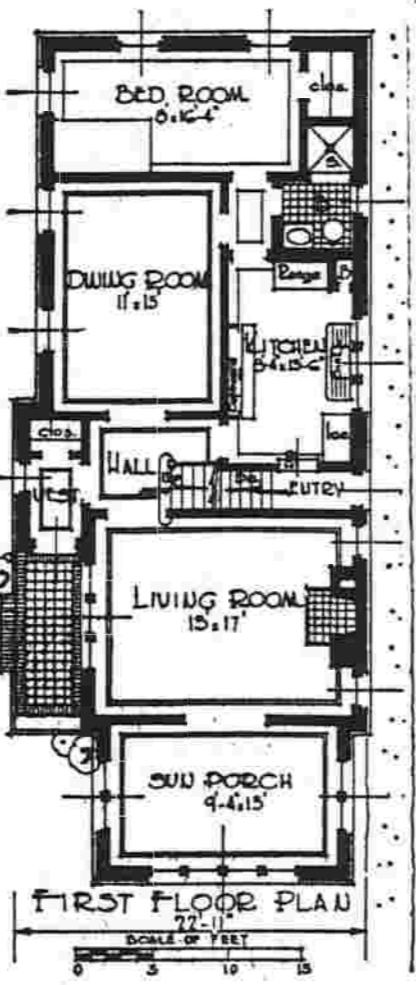
No attempt was made to achieve unity of external design in the single house and the row of four houses, which are of much less expensive materials, of simple, more or less Colonial design, in common brick, with plain cream-colored woodwork.

The plan of the single house is similar in principle to that of the four houses, though different in arrangement. It was dictated in

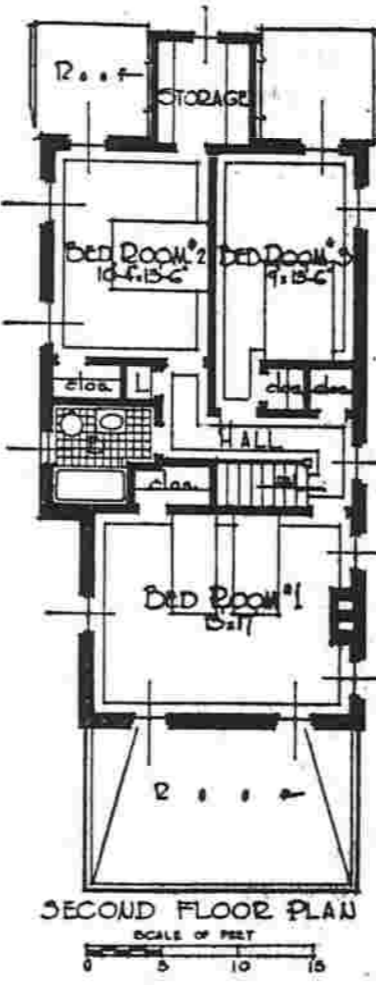
A Substantial Brick Home For a Narrow Lot



R. C. Hunter & Bro. Architects, New York



By R. C. Hunter & Bro., Architects, New York.
This house is designed to give the utmost in practical economy. It measures 22 feet, eleven inches across the front and will go on a 35 foot lot, allowing for a driveway. The walls are of break veneer; the roof asbestos shingles, so repairs will be at a minimum.
The plan arrangement is compact and convenient. There is not an inch of waste space.
A cellar extends under the entire house and here is the laundry, heater space and such.
Cost about \$14,000.
Complete working plans and specifications of this house may be obtained for a nominal sum from the Building Editor. Refer to House A-188.



separating the service yard from the entrance terrace, while the servants' bedrooms, on the first floor adjacent to the pantry, were placed along the east boundary, separating the service yard from the garden.
The service yard was thus bordered on two sides by the house, while the other two sides were inclosed by a wall pierced by a service gate, giving immediate access to the kitchen and basement by leading up and down. The service porch roof covers these steps and protects them from the weather. Window openings, without glass, provided in the wall to give the domestic staff a view of the street. The living room and the dining room are again placed on the garden side of the house, away from the street, with its dust and noise,

some measure by the presence of a handsome oak tree near the street in order to preserve the living room and dining room wing was kept back some distance from the building line.
The kitchen and laundry wing was brought forward to the street,

and the property line, to the southwest, was placed a shaded recess, inclosed by a high wall of local stone was built, laid with open joints on the face and cement mortar on the interior. Such a wall establishes a pleasant informal transition between the house and the planting.
With large trees already established little planting was required. A few ivy plants along the wall, a row of trees between the garden of the single house and the gardens of the roof of four houses a few rhododendrons and azaleas on the entrance terrace, and a few evergreens against the house to the southeast completed the design.
The house was prepared throughout, except the bathrooms, kitchen and pantry. The woodwork was painted everywhere except in the living room.

UM—VERY NIZE

"I saw you kiss my daughter. I can't stand that sort of thing."
"But you just try it. You have no idea how nice it is."—Uik, Berlin.

PROTECT YOUR HOME



with
Aircraft
Explosion
Fire
Rent
Tornado
Cyclone
or
Windstorm

INSURANCE

Fayette B. Clarke

10 Depot Square
Phone 3665

opening on a shady lawn to the southeast.
The house is built of stone covered with cream-colored stucco and trimmed with concrete blocks at the corners and around the openings. The band courses and gutter mold also are of concrete. All the concrete was precast and set like cut stone.
In the corner between the house

Constructed of Brick

When you make a contract for your home, garage or any other building and the specifications provide for brick construction you insure yourself against deterioration for a lifetime.

Arvid Seaburg
Mason Contractor

54 Walker St. Phone So. Manchester

Here's a Whole New BEDROOM SET for \$375!



YES, Ma'am! And what's more, this wonderful Inorout Enamel hardens in 4 hours into a finish as exquisite as the finest china—yet so hard it wears like armor plate! You'll find it easy to use... self-leveling... odorless... and in many beautiful colors.

SCHARR BROTHERS
Depot Square, Manchester
THE PAINT SERVICE STATION

The New Super-Automatic OIL HEATOR

Guarantees The Home Owner

1. Even heat regardless of changing—weather.
2. Quiet, dependable operation.
3. Lower cost of operation.
4. Lower cost of operation.

Now on display for the first time at

Paul Hillery, Inc.

749 Main Street, State Theater Building

ALL IS NOT LOST.
She: Here is your ring—I find we are not suited to each other.
He: Tell me the truth—you love another?

She: Yes.
He: Tell me his name—I insist.
She: You want to harm him?
He: No. I want to sell him this ring.—Hummell, Hamburg.



LUMBER That LASTS!

IF YOU are building for permanence, be sure to obtain sound, solid, substantial Lumber. To make sure of its quality, order it from The W. G. Glenney Co. yards, whence none but the staunchest, best Lumber comes—and at prices that won't conflict with your economy plans.

W. G. Glenney Co.

Coal, Lumber, Masons' Supplies.
Allen Place, Phone 4149 Manchester

Lumber—The Backbone of Building

William A. Knofia
President and Treasurer.

Albert F. Knofia
Secretary

MANCHESTER CONSTRUCTION CO. INC.
SKILL. INTEGRITY.
THE ASSOCIATED GENERAL CONTRACTORS OF AMERICA

RESPONSIBILITY.
CONTRACTORS.
SO. MANCHESTER, CONN.

WHAT IS A HOME Without Adequate PLUMBING & HEATING?

Answer:
JUST A HOUSE

Let us advise you on modern plumbing and heating. Estimates cheerfully furnished.

M. H. STRICKLAND
832 Main St. Phone 3768

A Complete Line Of BUILDING MATERIALS

Also
COAL

The
Manchester Lumber Company
Phone 5145



Says your PLUMBER

"While you are in the Clean Up and Paint Up mood, why not give a thought to this Fix Up idea? It extends to the plumbing in your house. Have there been leaky taps, stopped-up drains, rusted gutters? The plumbing in a house can't go forever without expert attention, you know. It wears out in time or at least comes in need of a good look-over. And we are ready to do this work for you thoroughly and economically."

Johnson & Little

Plumbing and Heating Contractors.
13 Chestnut St., 5876, South Manchester

INCREASED PRIDE in YOUR HOME Through More Beautiful Rooms

obtainable at a nominal charge by our interior decorators. The super color scheme and a bit of varnish will make those dull, dingy rooms like new. Texturing a specialty. For service or advice

CALL
The Manchester Decorating Co.
Phone 7471 Wm. T. Smyth, Prop. 74 East Center St.

IF

planning to build or modernize you will want dependable work. Let us make an estimate for you. Talk over your plans with us. We will be pleased to advise.

Gustave Schreiber & Sons
Building Contractors
West Center St. Phone 4090

:-: Modernization Of Home Requires Small Investment :-:

MODERN BATH COMPACT, NEAT AND SANITARY

The great advance in bathroom fixtures is illustrated forcefully by the before and after illustrations on this page.

The view at the bottom shows a typical bathroom of yester-year. It is a bare, dingy room, gloomy and ill ventilated. The fixtures are in style many years ago and their presence is today a sign that modernization is needed.

In contrast look at the view to the left. Note the handsome fixtures and evidence of good taste.

Modern Bathroom Compact

The modern bathroom is designed to utilize every square foot of space. The fixtures fit snugly without crowding. Careful planning can adapt even as small a room as 6x7 1/2 feet so that it has a spacious look.

In this particular installation the floor and wainscoting are linoleum which is easily cleaned. Often tiles are placed on the floor and form the wainscot. The upper walls are finished in plaster, painted to harmonize with the wainscot. This wall may be covered with canvas, sheeting, wall paper or chintz. Whatever the material it should be finished with a shellac or enamel to protect it.

The radiator is set in a recess in the wall and protected by a grille. The use of a recess conserves space in a small room.

Mirror Flanked by Lights

The mirror is hung opening on a cabinet for toilet articles. On each side of the mirror are electric lamps with frosted bulbs which give a clear, soft light.

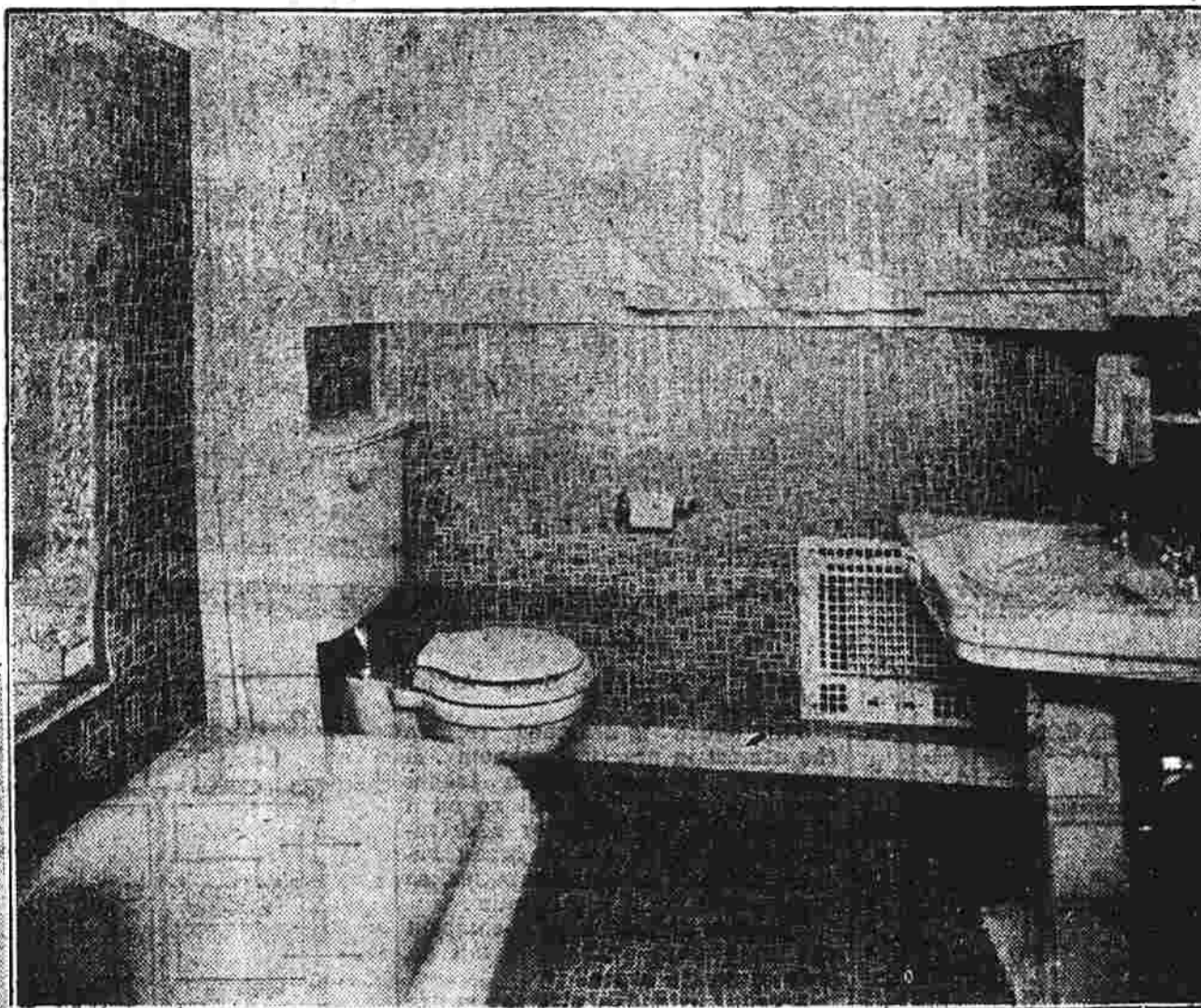
The enamel bath sets on the floor, thus preventing an accumulation of dust beneath. It is low.

NEW SUPER OIL HEATER RECEIVED BY HILLERY

Paul Hillery Inc., located in the State theater building received today the first Super Automatic Oil Heat unit to be received in this section. The new unit is a decided improvement over the older models and it is guaranteed by the manufacturer not to create any radio interference while in operation. A complaint owners have had to contend with on the past Super Oil Heat is a heating unit that should be installed in the furnace of every model home. The cost of unit and upkeep is surprisingly low. Mr. Hillery will be glad to show those interested the additional advantages and value of this unit.

The number of seeds produced a year by an average radish is about 10,000; by a tobacco plant 250,000; by a false flax plant, 730,000.

THE NEW BATH ROOM A GREAT CONTRAST TO OLD TIMER



These views show the great strides made in beautifying the bathroom. Above is a compact little room with modern appointments such as shower and built-in tub.

IMPROVING THE HOME OFTEN COSTS LITTLE

One of the early questions that rises in the minds of the home owner who contemplates modernization is that of cost.

"What will it cost me to modernize my home?" is the question that is constantly raised.

The answer to such a question logically depends on the condition of the home, its size, the amount of modernizing to be done and other subjects of similar nature.

Old Homes Require Greater Expenditure

Obviously the house that was built back in the gay nineties when many of the common conveniences of today were unknown, will require a greater expenditure of money than the dwelling that was constructed ten or fifteen years ago.

The old house of the day of Free Silver has an architectural style that is obsolete. The ginger bread trimmings, the ill-arranged rooms and the lack of up-to-date fixtures call for a thorough modernization.

On the other hand, a house that was built ten or fifteen years ago has many of the conveniences that are standard today. It may require a new heating plant, a sun porch, up to date electrical fixtures, or more pleasing interior decorations.

The older the house the more the cost of modernizing will be.

Average Cost \$2,000

An investigation into the costs of modernizing various homes disclosed that the average cost of modernization was in the neighborhood of \$2,000.

This investigation covered over 100,000 homes and was conducted by an organization in a position to secure accurate figures—a state league of building and loan associations. They knew almost to a penny the actual amount spent on modernization by various home owners who submitted their modernizing plans when applying for loans.

Figures secured from other independent sources go to prove the accuracy of this estimate. \$2,000 is a fair amount to set up the average cost of modernizing a home.

Home Stood Idle

An instance is related of one house that stood idle for many months due to its poor condition. This house was constructed back in the days when stove heat was universal. It had no cellar nor modern lighting. It was ugly, rundown and apparently worthless.

Finally the house was modernized. A basement was excavated and a heating plant installed. New floors, a bathroom, a sleeping porch, up-to-date electrical fixtures and a new front porch were a part of the program. The house was completed and immediately rented. It is bringing in a steady income—and the modernizing expense amounted to \$1,823.

Detailed figures covering the cost of improving this old house are given in the accompanying table:

Detailed Modernizing Costs	
Excavation	\$ 40.00
Concrete	48.00
Stone	32.50
Brick	18.00
Building Tile	8.00
Plumbing	48.00
Pipe	250.00
Lighting Fixtures	30.00
Electrical Wiring	37.00
Plastering	12.00
Painting (exterior)	70.00
Painting (interior)	60.00
Decorating	50.00
Carpentry	375.00
Lumber	463.00
Floors	45.00
Trim, Sash and Stair work	200.00
Hardware	25.00
Glazing	7.00
	\$1,823.00

Secretary Stimson has announced a new position in Washington, that of "treasury editor." Probably someone will be appointed from one of the comic weeklies.



ELECTRIFY YOUR HOME

Years ago, wiring a home was just an ordinary job. Today it is planned to put at your greatest convenience, the power of electricity. Arrangement of lights and the siting of wall and floor plugs calls for an experienced electrical contractor. We are equipped to make all electrical installations, and the modernization of our charges and the thoroughness of our work has earned for us. Estimates furnished free of charge.

JOHNSON ELECTRIC CO.
29 Clinton St. Phone 4814

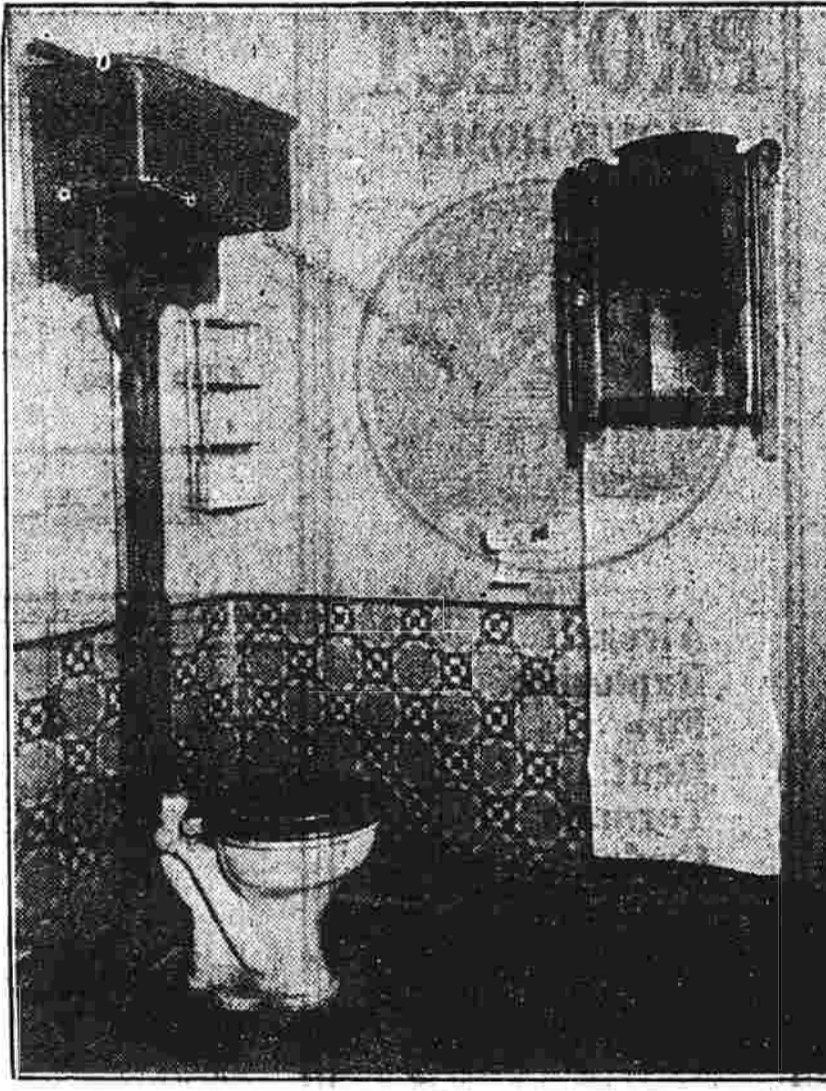
ROCK TERRACE HELPS BEAUTIFY LAWNS

A deep cut made when grading the street before the home often leaves the house with a steep slope leading to the lawn above. The problem of caring for this slope so that it will not wash away with succeeding rains has been solved by making a rock terrace to hold back the soil and at the same time beautiful the approach to the house.

Rock terraces are made by digging out the soil, placing boulders into the sunken holes and filling up the space about the rocks with good soil in which are planted rock plants.

Such plants as candy tuft, Scotch pansies, myrtle, lantanas, dwarf zinnias, verbenas, and lobelias may be placed between the rocks as well as such rock plants as sedum, alyssum, arabis and dianthus.

A planting like this keeps the terrace a continual mass of bloom from early spring until autumn. The rock terrace successfully solves a problem that has confronted many home owners who have steep slopes of raw earth to conceal.



Place Furniture For Comfort Beauty Follows

The ideal home interior is one in which comfort is perfectly blended with beauty. The secret of securing both comfort and beauty is to aim for comfort first, for on the trail of comfort one inevitably finds beauty as well.

When placing the furniture in the various rooms of the house keep this principle in mind and the results will be entirely satisfactory to you. Many a person has been perplexed by the problem of furniture arrangement, not knowing that the secret was so simple.

Comfort is a two-fold entity relating to the mind as well as to the body. Deep-cushioned well-proportioned chairs and couches, conveniently located tables, shaded lights, easy foot rests and luxurious rugs minister to the comfort of the body. But the mind seeks rest and ease also and finds it in such abstract entities as order, unity, balanced effects, good proportions, graceful lines and color harmony.

When grouping your furniture, decide on the center of interest for each group and place the various units that compose the group with reference to the chief object.

PROPER LANDSCAPING ENHANCES BEAUTY OF MODERNIZED HOME

The ramifications of the Home Modernizing movement are not apparent to the average home owner until his attention is called to the diverse number of ways that this modernization is expressed.

The fact that landscape gardening plays its part in making the home more attractive escapes the attention of the owner. Yet Mr. A. E. St. John, Manager of the Oakland Nurseries points out that the home, no matter how attractively designed is not finished until the grounds have been properly cared for.

"The home without proper landscaping might be likened to a jewel without a proper setting," remarked Mr. St. John, when commenting recently on The Herald's home modernizing pages. The wrong sort of landscaping is necessary always to plan the planting of trees and shrubbery and the location of gardens and walks with the dwelling in mind. Placing these haphazard will result in a home whose beauty is not properly expressed.

"Too many home owners are satisfied when they have started the lawn and set out a few shrubs. They forget that a little attention to landscaping will often double the attractiveness of the home.

"Then, too, the type of shrubs and flower gardens depends largely on the design of the residence. A formal garden, severe in its outlines is satisfactory only when the dwelling is designed on a formal plan. Many homes lie on the border and only a trained landscape artist can decide definitely the arrangement of the gardens.

One of the series of Home Modernizing pages which The Herald will run discusses the advantages of proper landscaping and its relation to modernizing. It is significant that landscaping has

Mutual Insurance Policies

Represent
DEPENDABLE PROTECTION

—at—
A LOWER RATE

Let Us Explain,
STUART J. WASLEY
815 Main Street Phone 6648

SERVICE FOR THE BUILDER DESIRING A BETTER HOME

CELLAR EXCAVATING

—PLUS—
MODERN MACHINERY

We use a gas shovel in all our excavating work thus giving you expert work in the shortest possible time. Time saving plus a price you can afford to pay.

A WORD TO THE WISE

Insist on your contractor using our sand and gravel in his work. You will then be assured of the best materials in all foundation or plaster work.

ALEXANDER JARVIS
Sand, Gravel and Excavating.
416 Center Street, South Manchester
PHONE 4224

HOME OWNERS INTRODUCING THE OILHEAT SYSTEM

No BOTHER MOTORS BLOWERS HEAT LOSS ELECTRICITY MOVING PARTS RADIO TROUBLE

DUAL CONTROL MANUAL or THERMOSTAT

Costs Less Than Other Makes to buy, install or operate.

WALTER B. KOHLS
107 Spruce St. Phone 8232
Plumbing, Heating, Tinning

E. L. G. Hohenthal, Jr.
General Contractor
24 Roosevelt Street South Manchester Tel. 3269

Estimates Furnished on Short Notice. Prompt Attention Given to Jobbing.

If you are planning to build a new home or modernize an old one let us do it.

The Manchester Sand & Gravel Co.
W. J. THORNTON, Prop.
Screened Sand and Gravel
Brick, Lom, Cinders and Trucking
QUALITY and SERVICE
Plant—Charter Oak St. Tel. 7387 | House 608 Woodbridge St. Tel. 6893

"yes, this is a good chair, Bill!"

Downright solid comfort, too—but I'm sitting pretty easy in another way also tonight. Just bought my Winter coal today, so I'll be sitting pretty when all the other birds are hopping round next Winter trying to get coal. And I'm at least a ten-spot to the good on the saving in the price.

HERE'S WHY: No strikes nor freight car shortages now to delay delivery and boost costs.

We specialize in prompt service for builders who buy our supplies.

Lime, Cement, Plaster, Flue Tile, Fireplace Brick, etc.

G. E. Willis & Son, Inc.
2 Main Street, Tel. 3319, Manchester

Just The Place We Want!

and we have enough in our savings account to make a substantial down payment to close the deal—"Ain't it a grand and glorious feeling."

It certainly is great that you are able to secure the house of your dreams—but it couldn't have been done if it hadn't been for the foresight of having a savings account.

THE SAVINGS BANK OF MANCHESTER
SOUTH MANCHESTER, CONN.
ESTABLISHED 1906

Whether You Are Building A New Home Or Modernizing An Old One Let

Own A Home In Manchester, The Ideal Residential Town

Clients Should Let Architects Pick Builders To Submit Bids

By HAROLD R. SLEEPER.

The question of co-operation in regard to design or planning has not been raised, as that will of necessity speak for itself and personalities will play the usual important role. If the client can hold in mind that he is not buying the house from the architect he will have gone much farther toward his part of the co-operation than is common. Don't bargain with your architect or he won't bother to bargain for you.

Another important subject to discuss with the architect is the selection of the list of general contractors who will be invited to estimate. Chapters might be written on sad tales resulting from lack of proper consideration on this point. If "so and so" tells you that his brother knows a fine builder who did a house for a friend of his, don't note the name—there are dozens of such builders everywhere. However, the number of competent, top-notch builders in any locality is very limited. It is your architect's job to help you locate these.

Often Pick Incompetents.

Of course, it's easier for him to take the list you give him and add one or two that he may know. But it's usually better if he point blank refuses any submitted by you without his personal investigation. Owners often force the inclusion of builders who have done garages or chicken coops for them. That

builder may be very competent to build just such structures, but even a small house has many complications.

An architect might hand a client such a list at this to start him on his round of discoveries:

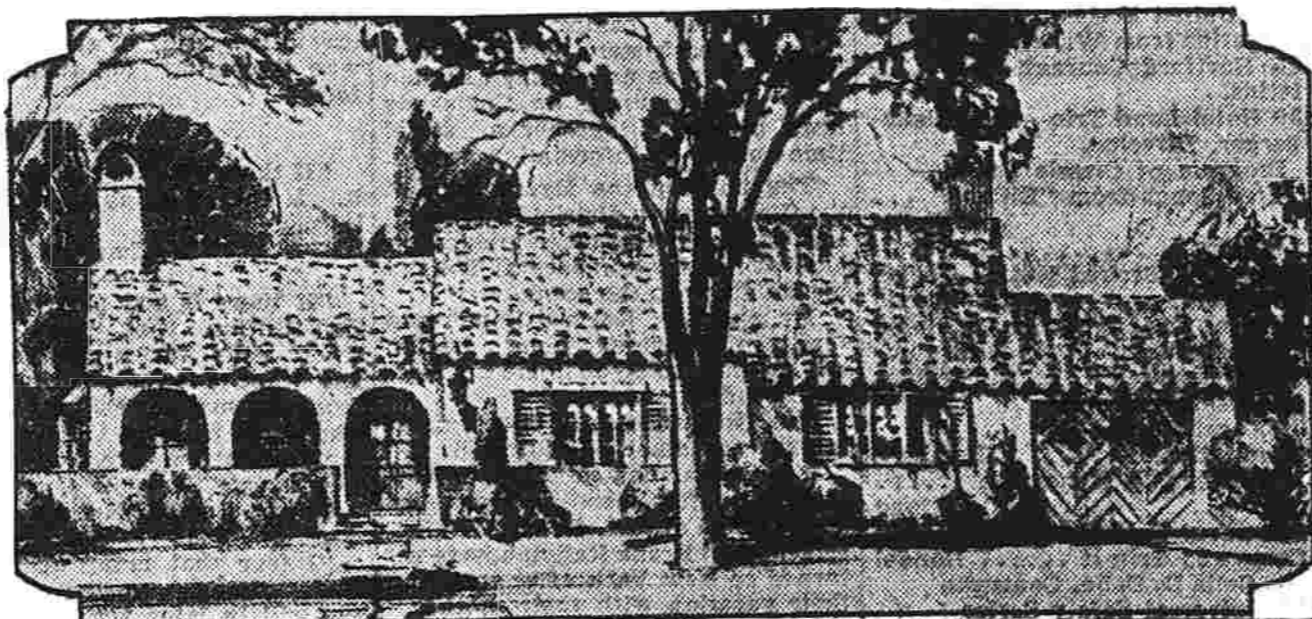
Floors—Service: linoleum, cork, tile, wood. Main rooms—oak, teak, maple. Bedrooms—maple, pine, edge grain. Baths—cork, tile (type and color), linoleum (type and color). Porch—cement colored, colored flags, bricks, slate.

Equipment—Kitchen, wood dressers, color; steel dressers, color; flour bin or barrel space; marble bread board or wood; glass cupboard doors or wood; plate warmer, gas or electric; refrigerator, ice, electric, what manufacture, size, one or two; kitchen sink, porcelain or enameled iron, size wood drainboards or enameled iron; pantry sink, Mondel metal or enameled iron, wood drainboard or enameled iron. And this might be continued through all the trades.

Next, the question of landscape work should be hashed over and some layout made either by a nursery or landscape architect can help in this either by consulting a landscape architect or by giving his own advice.

The architect has everything to win by the co-operation of a client and he will usually reciprocate gladly. This reciprocity weakens considerably if the client's interest turns into would-be dictation rather than suggestion.

HERE'S A SMALL SPANISH HOME FOR TOWN OR COUNTRY



BY CORA W. WILSON

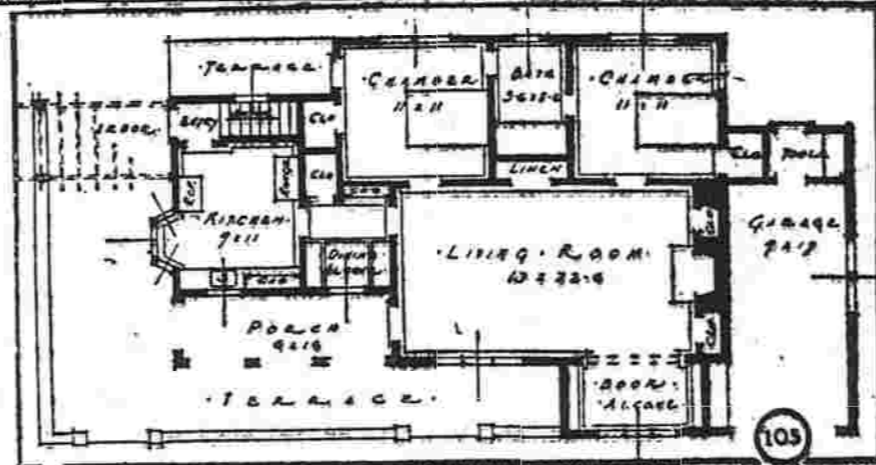
For NEA Service

Houses must be liveable ahead of all else. And it is "liveability" that gives a house of the Spanish type pictured here its great appeal to home-lovers.

This house will "fit in" in city, town and country. Generally in new world interpretations of Spanish homes one finds a complication of steps and a balcony in the rear of the living room. But this home was planned to save steps and money.

The four convenient sized rooms are on a level. There are a dining nook, many closets, a modern bath and a garage.

The house is of wood construction. Stucco is applied to metal bath. The roof is Spanish tile. The front door and the garage doors



are constructed of heavy oak battens, adding much to the design of the house.

The house is 52 feet wide and has a depth of 31 feet—requiring, of course, only a moderate-sized lot.

For additional information and cost estimate write to Mrs. Cora W. Wilson, 420 Madison Avenue, New York City, and be sure to enclose the clipping from this newspaper.

HARD TO SUIT.
Goller (who has just gone around in 112): Well, how do you like my game?
Caddie: I suppose it's all right, but I still prefer golf.—Tit-Bits.

HAD HIS EYES CLOSED.
"You kiss like Gretz Garbo."
"What! Have you been two-timing me?"—Life.

Andrew Stavinsky
Carpenter and Builder
Remodeling Jobbing
Estimates
61 Lyness St. Phone 6181



PAINT UP

A building may be perfect as to architecture and beautiful as to lines, but if it needs a coat of paint and if this important work has been long neglected, the physical beauty of the architecture disappears. Paint brings out the charm of any house, aside from the factor of preserving wood.

JOSEPH BENSON
PAINTER AND DECORATOR
Phone 8731

INVEST IN

PROTECTION

Against **FIRE**

We can insure you against all forms of loss.

Play Safe, Protect Your Home.
Fire, Automobile, Tornado, Liability

Holden-Nelson Co., Inc.
832 Main St. Phone 8037
Insurance of All Kinds.

The Study should be Inspirational

It may be a small room, tucked away, but it offers a reward to be glad to add in your family life obtrudes too strongly. To carry out the atmosphere of restful ease we have collected special papers particularly appropriate to use in a small informal room of this sort.



There are plain rugged designs, bold and masculine in character, papers with a stippled effect that have the same quality as a rough plastered wall. These are a perfect background for prints and the various trophies with which a room of this sort is apt to abound. You may consult experts here, without cost—they treat when the pressure of trying out a successful decorative scheme.

John I. Olson
Painting and Decorating Contractor.
699 Main St., South Manchester



PROSPECT STREET

This attractive new English type home of 6 well arranged rooms and sun room—all oak floors, hot water heat, fireplace, tile bath with shower, brass piping throughout, attached heated garage, high, quiet location near Hartford Road bus line and Cheney Mills.

Price low. Open for Inspection Saturday and Sunday Afternoon

T. D. FAULKNER CO.

36 Pearl St., Hartford. Tel. 2-2241

Manchester Representatives.

L. S. Burr, Tel. 4522 R. J. McKay, Tel. 6185

Good Buildings Deserve Good Hardware

CORBIN

Varied in kind... alike in obligation

From tiny catch to massive hinge, from push button plate to door-check—all are at your service in Good Hardware-Corbin.

Remember, the catch on a cellar window may be as important as the lock on an entrance door. The smallest bolt may stand between you and the loss of valuable property. And remember that Corbin makes all these items—every one of them

Good Hardware-Corbin. The same excellence that has made "Corbin" mean so much on fine locks and door-checks, applies to the smallest of the thousands of articles made by Corbin for every hardware need.

Be it for attic or front door, kitchen cupboard or casement window—Good Hardware-Corbin—is strong, dependable, easy-working, correct.

The F. T. Blish Hdw. Co.

RE-ROOF NOW

Beaver Asphalt Shingles

Economy Roofing Co.

132 Maple Ave., Hartford. Tel. 7-5485
Local Rep. M. A. Ferris, 208 Oak Street
Estimates Free

—PLANT—

Your Home



With Fruits and Ornamental Trees, Flowering Shrubs, Vines, Roses, Evergreens, etc.

HARDY NEW ENGLAND STOCK

No charges for sketches or estimates. Planting if desired at actual cost of labor. Phone 283 and Our Representative Will Call.

REMEMBER "It's Not a Home 'Til It's Planted."

The Oakland Nurseries

HARDY NEW ENGLAND STOCK

GROWERS OF QUALITY TREES AND PLANTS

A. E. ST. JOHN, Manager.

Your Strength and Energy

or the Modern Servant—Electricity?

Are your housekeeping methods the same as those of your mother and grandmother? Does it take you as long to keep the house in order and prepare the meals?

Electricity has revolutionized work in office and factory. The man-power of the country is employing methods that are remarkable improvements over the ways of the previous generations.

Housekeeping is a job quite different from office or factory work, but quite as important. Electricity is prepared to revolutionize woman's work in the home. Are you enjoying its benefits?

The Manchester Electric Co.
773 Main St. Phone 5181
South Manchester

"What is home without Hot Water?"

"It simply wouldn't be home at all," said Priscilla. "Can you imagine John... in a hurry as always... razor all ready... and then no hot water! Wow! And with dishes, laundry and cleaning, my day would be utterly ruined, too."

PRISCILLA knows that at least a third of all the water used in the average home should be hot. Why, then, should she try to worry along with an old-fashioned way of heating it?

The gas water heating system has made possible one of life's most necessary conveniences—all the hot water you need, at the instant you need it.

Hot water for the many baths which doctors advise for health. Hot water for keeping the kiddies sweet and clean; to make the dishes shine; for coaxing stubborn dirt out of clothing. How helpless and over-worked you would be without hot water for these and many other purposes!

See your gas company for what's new in water heating. And you will be interested, too, in the latest gas appliances for cooking, house heating, refrigeration, laundry drying, incineration, garage heating, fireplaces, store heating, etc.

A small down payment, with easy terms for the balance, will bring you any of them.

Water All Year-Round With Gas

The Manchester Gas Co.
Phone 5075

GILEAD

Mrs. Clara Hamner spent Tuesday with Mrs. Alfred Hamner at Cornfield Point.

Mrs. Asa W. Ellis accompanied by her parents, Mr. and Mrs. Waldo of Hebron, visited his sister, Mrs. Justin Hollister, at her home in Glastonbury Tuesday.

Miss Ruth Ellis and Miss Alice Owen have returned from their motor trip. They drove fifteen hundred miles and report a fine time with no motor trouble.

The Young Women's club held its annual picnic at Marlborough lake Thursday. Including visiting guests about seventy-five persons attended.

Lawrence Hays of Cambridge, Mass., was a visitor at Hart E. Buell's on Thursday. On his return his mother, Mrs. Grace Hays, accompanied him after passing two weeks with Mr. and Mrs. Buell.

The annual Tolland county Farm Bureau picnic was held Friday at South Coventry on the "Plains." There were demonstrations, group meetings and contests. The dinner consisted of basket lunches, ice cream and lemonade. Several Gilead families attended.

Mrs. Louis Twining returned to her home in Hartford Wednesday after passing a few days at A. H. Post's.

Mr. and Mrs. Clayton Hill spent a day recently with Mr. Hill's mother, Mrs. Elizabeth Hill, at the Willimantic Camp Ground.

Harry Sherman, Edward A. Fook, Olive Warner and Lovina Fook plan to take the junior short course to be held soon at Storrs.

IGNORANCE WILL OUT.

They were returning from a trip to France and the white cliffs of Dover were getting clearer and clearer as the steamer ploughed through the choppy sea.

A boisterous man of the red-faced type so often encountered on such excursions was airing his knowledge of things in general, but he was puzzled at the round of laughter which greeted his cherty announcement:

"Well, we shall soon be on pomme de terre again now!"—Tit-Bits.



The Home Bank and Trust Company

"The Bank of Service" South Manchester, Connecticut

TO OWN



OUR OWN HOME

"WE MUST SAVE Systematically"

"LOOK, it's easy to figure: Suppose we put away this amount every week for a year. Multiply by 52 and then add interest and see what we have—in just one year!" Figures don't lie. Building up a savings account is a safe, sane, simple, sure way of creating a neat little "nest-egg." A bank account is cumulative always, speculative never. We have a deposit book waiting for you.

These Contractors Do The Work And These Firms Supply The Materials!

DAILY RADIO PROGRAM

Saturday, July 20.

The WJZ network states the majority of radio highlights for Saturday night. At 8:45 the Golden Band will be introduced from the New York studio...

Wave lengths in meters on left of station call letters, on right. Times are Eastern Daylight Saving and Eastern Standard. Plack face type indicates features.

Leading East Stations.

- (DST) (ST) 272.5-WPG, ATLANTIC CITY-1100. 8:45-9:15-Tenor, baritone, piano. 9:15-9:30-Studio hour...

422.3-WOR, NEWARK-710.

- 7:45-8:15-Nineteenth Hole feature. 8:15-8:30-Security League address. 8:30-8:45-Fleming program...

Wave lengths in meters on left of station call letters...

Leading East Stations.

- (DST) (ST) 272.5-WPG, ATLANTIC CITY-1100. 8:45-9:15-Tenor, baritone, piano. 9:15-9:30-Studio hour...

Leading DX Stations.

- (DST) (ST) 405.2-WBS, ATLANTA-740. 8:00-8:30-Sunday school lesson. 8:30-8:55-Music program...

WTIC PROGRAMS

Program for Saturday

- 6:20 p. m. Summary of Program and United States Daily News. 6:30-7:00-Bulletins from Washington...

TOLLAND

Mrs. Carl Toblason of Wethersfield, was a guest of Mrs. Howard Crandall Tuesday and Wednesday. Twelve ladies availed themselves of the opportunity to meet with Mrs. Sarah White Dimock...

QUOTATIONS

"Sympathy, unselfishness, a tendency to play for the whole team, those things which enable a man to work effectively with others, are now, I think, of greater importance..."

TILDEN AND HUNTER WIN OVER GERMANS

Berlin, July 20.—The United States team, a lead of two matches to none in the Davis Cup inter-zone finals with Germany yesterday thanks to Bill Tilden and Francis Hunter who respectively defeated Hans Moldenhauer and Dr. Daniel Prentz...

WM. P. KRAH Expert Radio Service

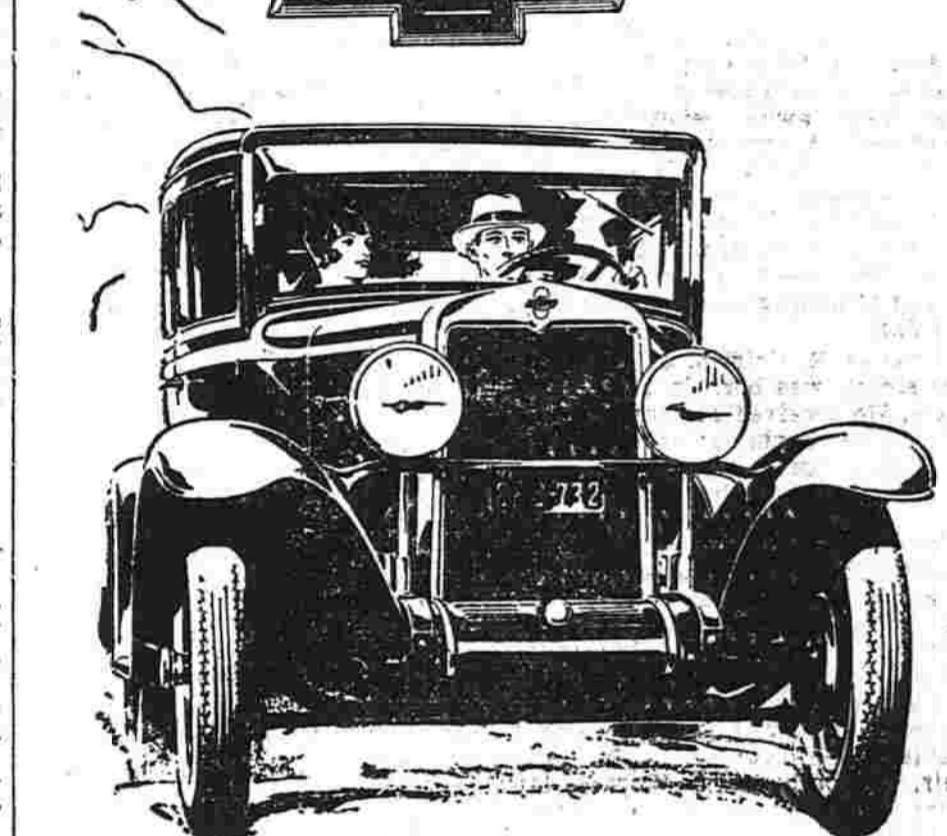
Advertisement for Wm. P. Krah Radio Service featuring a radio and contact information.

Manchester Monumental Co.

Description: Lettering and Cleaning in All Cemeteries. N. AMBROSINI, Prop.

"I fear that many of the carefree young women of this age will in later years become the most discontented old women our race has ever known."

CHEVROLET



A SIX in the price range of the four! The Chevrolet Six is scoring a sensational nationwide success because it provides everything you want in a fine, sturdy automobile—yet it actually sells in the price range of the four.

DAILY RADIO PROGRAM

Sunday, July 21.

Maurice Ustaev, a time printer and now famous radio entertainer and recording artist, will be the headline in the program...

Wave lengths in meters on left of station call letters, on right. Times are Eastern Daylight Saving and Eastern Standard. Plack face type indicates best features.

Leading East Stations.

- (DST) (ST) 272.5-WPG, ATLANTIC CITY-1100. 8:45-9:15-Tenor, baritone, piano. 9:15-9:30-Studio hour...

422.3-WOR, NEWARK-710.

- 7:45-8:15-Nineteenth Hole feature. 8:15-8:30-Security League address. 8:30-8:45-Fleming program...

Wave lengths in meters on left of station call letters...

Leading East Stations.

- (DST) (ST) 272.5-WPG, ATLANTIC CITY-1100. 8:45-9:15-Tenor, baritone, piano. 9:15-9:30-Studio hour...

Leading DX Stations.

- (DST) (ST) 405.2-WBS, ATLANTA-740. 8:00-8:30-Sunday school lesson. 8:30-8:55-Music program...

WTIC PROGRAMS

Program for Sunday

- 6:20 p. m. Summary of Program and United States Daily News. 6:30-7:00-Bulletins from Washington...

TOLLAND

Mrs. Carl Toblason of Wethersfield, was a guest of Mrs. Howard Crandall Tuesday and Wednesday. Twelve ladies availed themselves of the opportunity to meet with Mrs. Sarah White Dimock...

QUOTATIONS

"Sympathy, unselfishness, a tendency to play for the whole team, those things which enable a man to work effectively with others, are now, I think, of greater importance..."

TILDEN AND HUNTER WIN OVER GERMANS

Berlin, July 20.—The United States team, a lead of two matches to none in the Davis Cup inter-zone finals with Germany yesterday thanks to Bill Tilden and Francis Hunter...

WM. P. KRAH Expert Radio Service

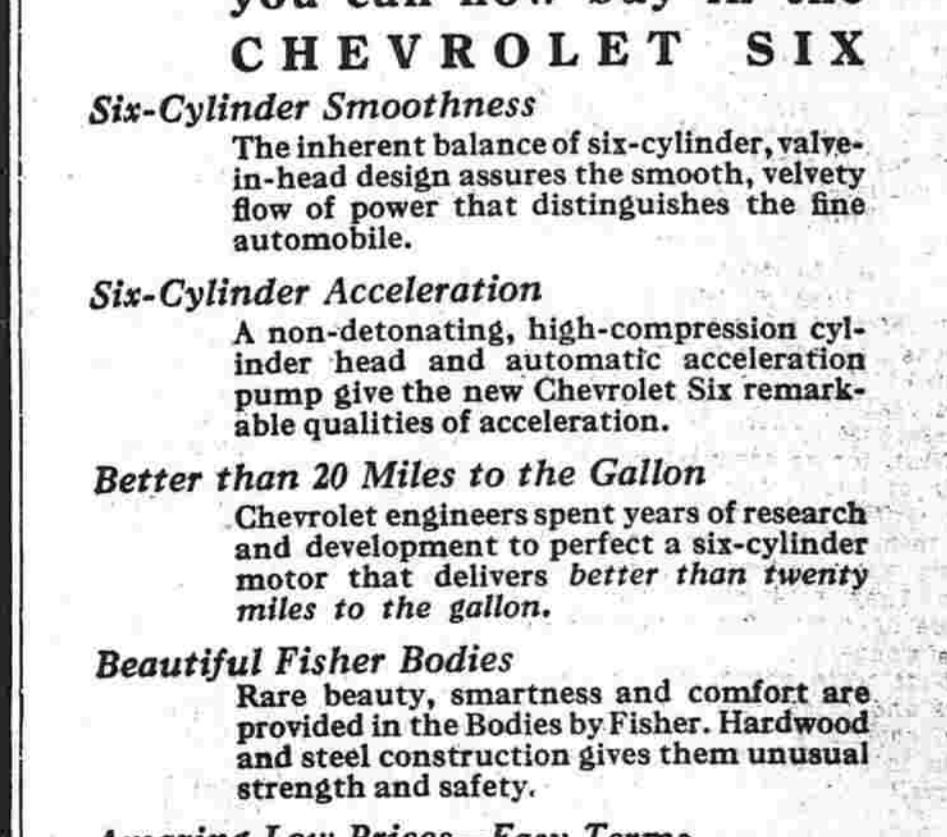
Advertisement for Wm. P. Krah Radio Service featuring a radio and contact information.

Manchester Monumental Co.

Description: Lettering and Cleaning in All Cemeteries. N. AMBROSINI, Prop.

"I fear that many of the carefree young women of this age will in later years become the most discontented old women our race has ever known."

CHEVROLET



A SIX in the price range of the four! The Chevrolet Six is scoring a sensational nationwide success because it provides everything you want in a fine, sturdy automobile—yet it actually sells in the price range of the four.

TODAY IS THE ANNIVERSARY

On July 20, 1918, the German troops under General Ludendorff were driven back across the Marne by American and French troops in one of the most im-

portant offensives staged by the allied troops during the World War. The drive which Ludendorff started on July 15 was his fifth and what proved to be his last offensive of the war and it terminated in history as the Second Battle of...

in force southeast of Chateau-Thierry but a counter-attack soon drove them back. And their attacks around Eligny and Pruany, as well as elsewhere, were also checked.

A result of the failure of this offensive of the war and is termed entire front was changed on July 18 when Americans and French began a successful offensive from the Marne to the Aisne which changed a dangerous situation for the Allies into a far more dangerous one for the Germans.

OAKLYN FILLING STATION

Every Tire a Genuine First Grade Product—Guaranteed 20,000 miles. HERE'S BIG VALUE

Table listing tire sizes and prices: 27x4.40 \$7.00, 29x4.40 \$7.40, 30x4.50 \$8.25, 28x4.75 \$9.15, 29x4.75 \$9.55, 30x4.75 \$9.95, 32x4.95 \$12.25, 29x5.00 \$9.90, 30x5.00 \$10.20, 31x5.00 \$10.65, 32x5.00 \$11.75, 28x5.25 \$11.10, 29x5.25 \$11.55, 30x5.25 \$11.90, 31x5.25 \$12.25, 28x5.50 \$12.30, 29x5.50 \$12.65, 30x5.50 \$12.90, 30x6.00 \$13.55

SERVICE

We mount, dismount and change your tires around to suit your free of charge.

Advertisement for The Mackley Chevrolet Co., Inc. featuring a table of car prices and models.

A SIX IN THE PRICE RANGE OF THE FOUR

THE CLASSIFIED SECTION BUY AND SELL HERE

Want Ad Information Manchester Evening Herald CLASSIFIED ADVERTISEMENTS

INDEX OF CLASSIFICATIONS Births, Marriages, Deaths, etc.

Table listing various classified ad categories such as Automobiles, Musical Instruments, and Real Estate.

LOST AND FOUND

LOST—DOG—IRISH setter, vicinity of North Manchester, male, dark red, plain leather collar.

ANNOUNCEMENTS

STEAMSHIP TICKETS—All parts of the world. Ask for sailing lists and rates.

AUTOMOBILES FOR SALE

FOR SALE—1929 Buick sedan demonstrator, with small mileage.

MOVING—TRUCKING—STORAGE

STORAGE ROOM for furniture or merchandise, available at Braithwaite's, 52 Pearl street.

PROFESSIONAL SERVICES

PLANO TUNING Expert work guaranteed Kemp's Music House

REPAIRING

MOWER SHARPENING, vacuum cleaner, phonograph, clock, lock repairing.

COURSES AND CLASSES

SPECIAL DAY and evening summer classes now open in barbering. Low rate of tuition.

MUSICAL—DRAMATIC

MR. THOS. PUCCI is back in town and he will continue teaching music at his studio at 166 Oak street.

HELP WANTED—MALE

DISTRIBUTORS: Men 20 to 52, opportunity is yours. Distribute collect 100 stores.

HELP WANTED—MALE OR FEMALE

WANTED—BOYS women and girls to harvest shade grown tobacco.

BOATS AND ACCESSORIES

FOR SALE—27 L-2 ft. cabin cruiser, fully equipped, A-1 condition.

ELECTRICAL APPLIANCES

FOR SALE—ONE WORLD radio with 5 tubes, 4 B eliminators.

GARDEN—LAWN—DAIRY PRODUCTS

20,000 TRANSPLANTED celery plants, easy blanching.

HOUSEHOLD GOODS

ONE 3 PIECE Davenport suite, in A-1 condition, covered in the best of tapestry.

MUSICAL INSTRUMENTS

NEW DANCE RECORDS just in 3 for \$1.00. Sheet music 30c copy.

LOST AND FOUND Being anxious to return that article you found to its owner, you'll look for his ad in our want ads.

LOOK IN THE CLASSIFIED OR CALL 5121 WHEN YOU WANT TO RUN AN AD

MUSICAL INSTRUMENTS

FOR SALE—UPRIGHT piano, in good condition, Telephone 7497.

WANTED—TO BUY

WILL PAY HIGHEST cash prices for rags, paper, magazines and miscell.

ROOMS WITHOUT BOARD

FOR RENT—FURNISHED rooms and garage, also three room apartment.

BOARDERS WANTED

BOARDERS WANTED near Center and mills, in a private family.

WANTED—ROOMS—BOARD

WANTED—ROOM and board by young man, in private family.

APARTMENTS—FLATS—TENEMENTS

FOR RENT—6 ROOM tenement, all improvements, Call at 28 Foley street.

HOUSES FOR RENT

FOR RENT—6 ROOM house, all improvements, steam heat, and garage.

SUMMER HOMES FOR RENT

FOR RENT—COTTAGE At Saybrook Manor, unoccupied weeks of August.

HOUSES FOR SALE

FOR SALE—NEW HOMES on Walker, Henry, Washington, Park, Phelps Road and Fairview streets.

RESORT PROPERTY FOR SALE

FOR SALE—4 ROOM furnished cottage with screened-in sleeping porch.

HOUSES FOR SALE

FOR SALE—4 ROOM furnished cottage with screened-in sleeping porch.

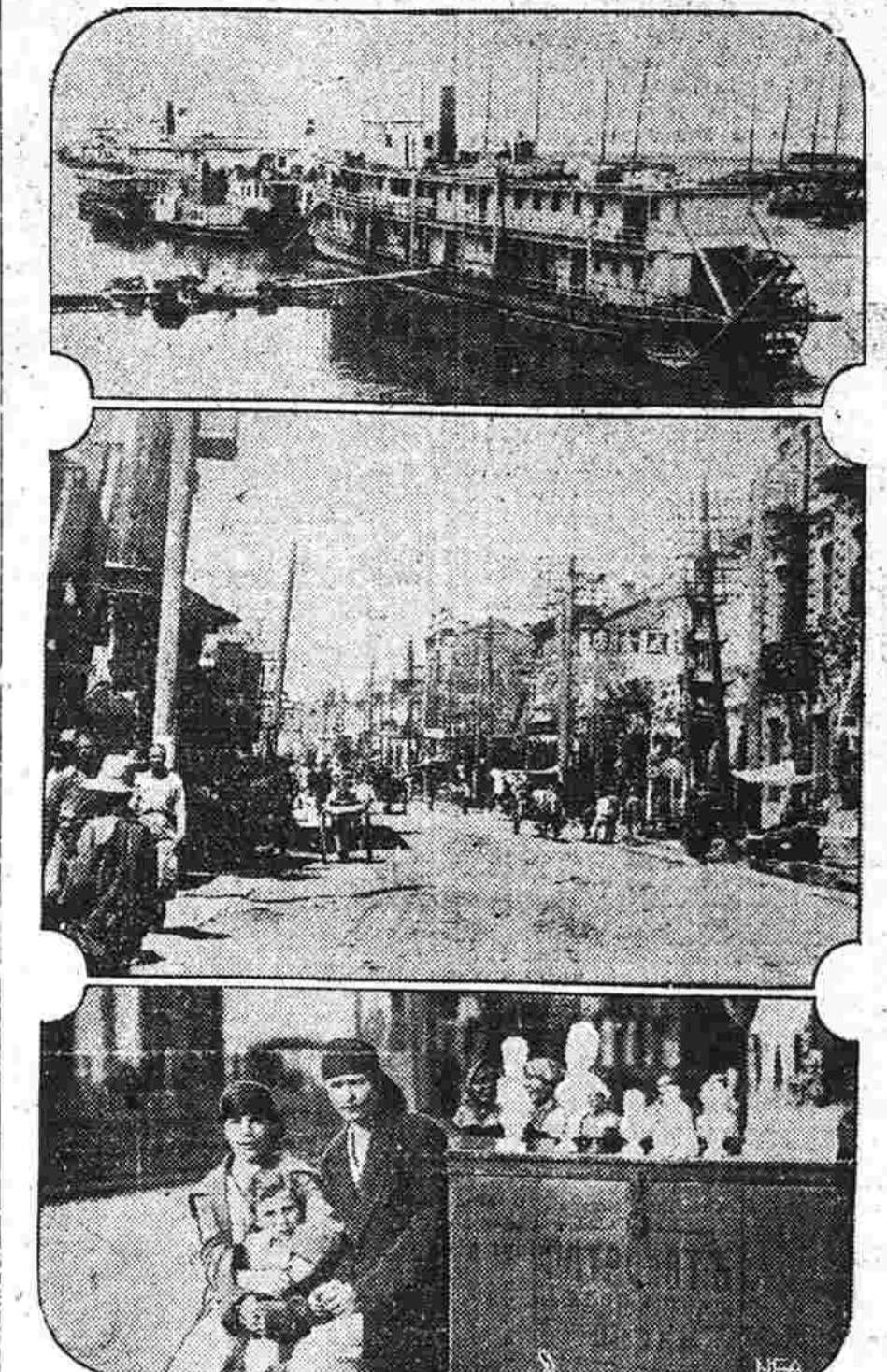
HOUSES FOR SALE

FOR SALE—NEW HOMES on Walker, Henry, Washington, Park, Phelps Road and Fairview streets.

HOUSES FOR SALE

FOR SALE—4 ROOM furnished cottage with screened-in sleeping porch.

Center of Russo-Chinese War



These exclusive pictures show scenes in Harbin, the Russo-Chinese city along the Chinese Eastern railway, where much of the present trouble between China and Russia is centering.

RUSS RAILWAY CAUSE OF 30 YEARS TROUBLE

(Continued from Page 1) selves utterly powerless in the railroad zone. The situation was as troubling as if some foreign power—say Japan, for instance—owned the Union Pacific railroad in America and set up its own governmental machinery all along the right of way.

A slight check to Russia's schemes came in 1903 when Japan, alarmed at the growing strength of Russia in the neighborhood of Korea—which the Japanese even then were preparing to annex—declared war on the czar's government.

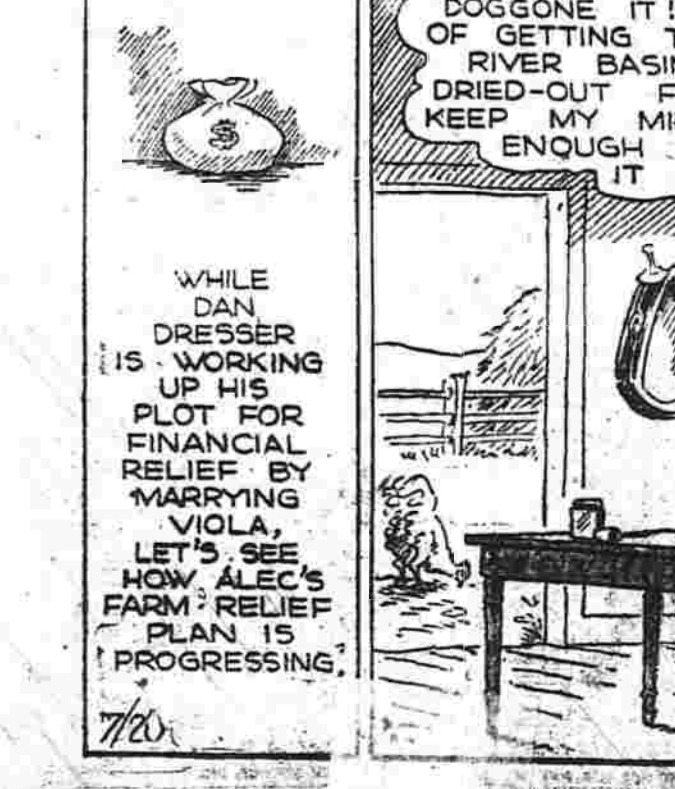
SUPER ATTRACTION AT RAU'S MONDAY

As the first in a series of super-attractions, Connie Rau will present Phil Napoleon and his present orchestra from Monday night, July 22nd.

USED CARS

Advertisement for used cars, listing various models like 1927 REO, 1929 CHEVROLET, and 1928 PONTIAC with descriptions and prices.

GAS BUGGIES—Poor Old Alec



By FRANK BECK



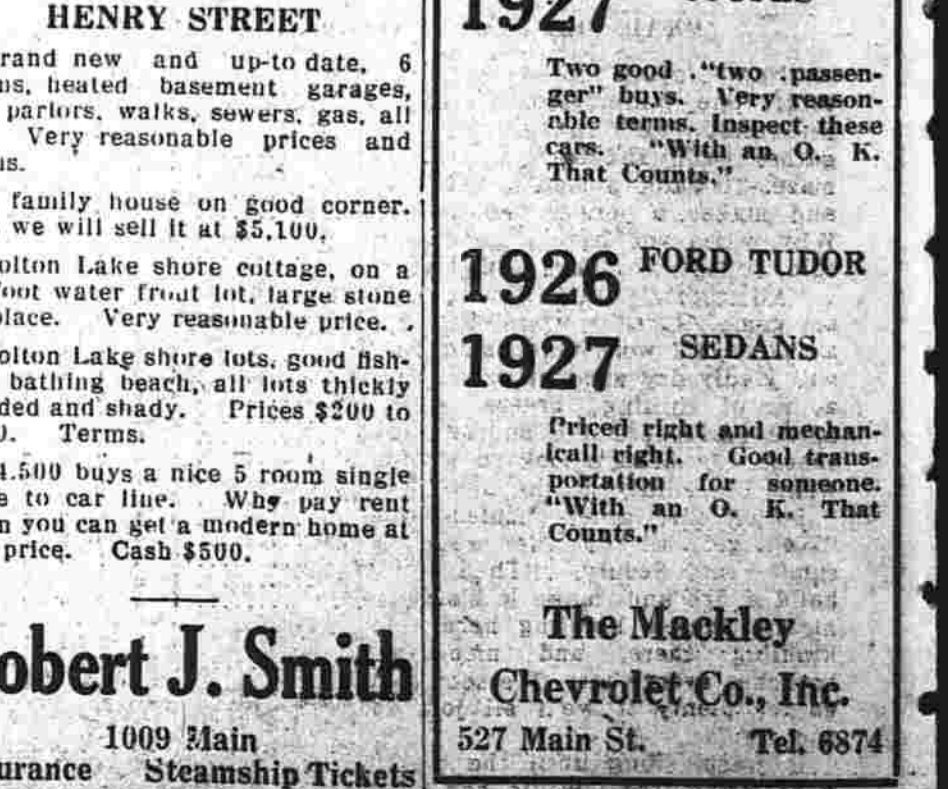
By FRANK BECK



By FRANK BECK



By FRANK BECK



BY ADDER FANNY SAYS



A girl usually wins at tennis when all her returns are in.

SENSE and NONSENSE

Moon drift. The moon drifts in the purple sky, a silver boat on a shoreless sea. And ghostly clouds go floating by, while softly stings the evening breeze. Across the lake the ripples stir, and moonbeams glimmer, cold and pale. And in a light canoe with her, he follows down the moonlight trail.

As the first rooster remarked to the second, "Say, bo! You'd better hide out. There's a couple of women laying for you!"

It would seem that the reason all young women don't get married is that they're not widows.

Daughter: "Well, dad, I'm engaged." Father: "You don't mean it?" Daughter: "Certainly not, but it's lots of fun."

The morning after the night before the cat came back at the hour of four. The innocent look in her eyes had went. But the smile on her face was a smile of content.

She—Spent my vacation in the mountains. He—Really, did you have a guide? She—Well, only my conscience.

At the picnic the other evening a young couple slipped away and were spooning. She asked: "Does my head on your shoulder give you a thrill?" He squirmed as he answered: "No, I think I'm sitting on some sand burrs."

Clara: "Do you get your alimony regularly?" Marie: "No, I might just as well be living with him."

Glady: "Her mother always called her the fairest flower of girlhood." Helen: "Isn't it too bad she grew up to be a Wall Flower?"

Tightskirt Tillie says that civilization won't be perfect until they put out canned foods that can be opened with a push button.

No really great man ever thought himself so. The difference in a cemetery and a graveyard is that one is in town and the other in the country.

"Just because you are unable to swim the Atlantic Ocean is no excuse for your not taking a bath occasionally."

LETTER GOLF CURE YOURSELF OF GOLF

Ordinarily there isn't much difference between CURE and HEAL, but in letter golf there's a difference of five strokes. One solution is on another page.

Letter Golf grid with words CURE and HEAL.

THE RULES

- 1-The idea of Letter Golf is to change one word to another and do it in par, a given number of strokes. Thus to change COW to HEN, in three strokes, COW, HOW, HEW, HEN. 2-You change only one letter at a time. 3-You must have a complete word, of common usage, for each jump. Slang words and abbreviations don't count. 4-The order of letters cannot be changed. A free country is one that passes laws to please its conscience and then breaks them to please its appetite. If a man's face is his fortune, some of us are in debt.

THE TINYMITES STORY BY HAL COCHRAN PICTURES BY KONG



(READ THE STORY, THEN COLOR THE PICTURE) "Now Clowny, do as you are told," one Willie said. "Or you'll catch cold. We'll run around and gather wood and start a roaring blaze. To catch a cold is very bad and makes a person feel so sad. Why, when you have a good hard cold, it lasts for days and days." "All right," said Clowny. "I am game. It really would be quite a shame if I were taken sick, so I will gladly dry my clothes. I fear a bit of chilling breeze would make me sneeze and sneeze and sneeze. I always look so funny when I'm sniffling at the nose." So off the other Tinies ran. "We'll get all of the wood we can," said Scouty. "Then we'll build a fire and make it blaze up high. There's kindling here and kindling there, and nice dry branches everywhere. We soon can gather plenty if we'll all join in and try." It wasn't long until the bunch were glad the Willie had his

SKIPPY



The Terrible Tempered Mr. Bang



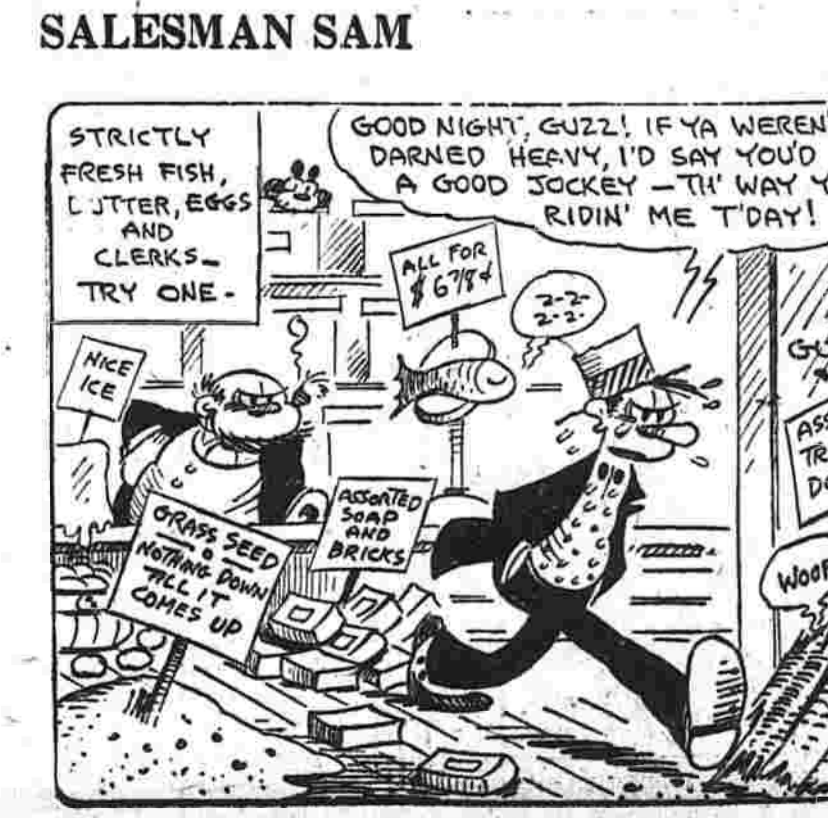
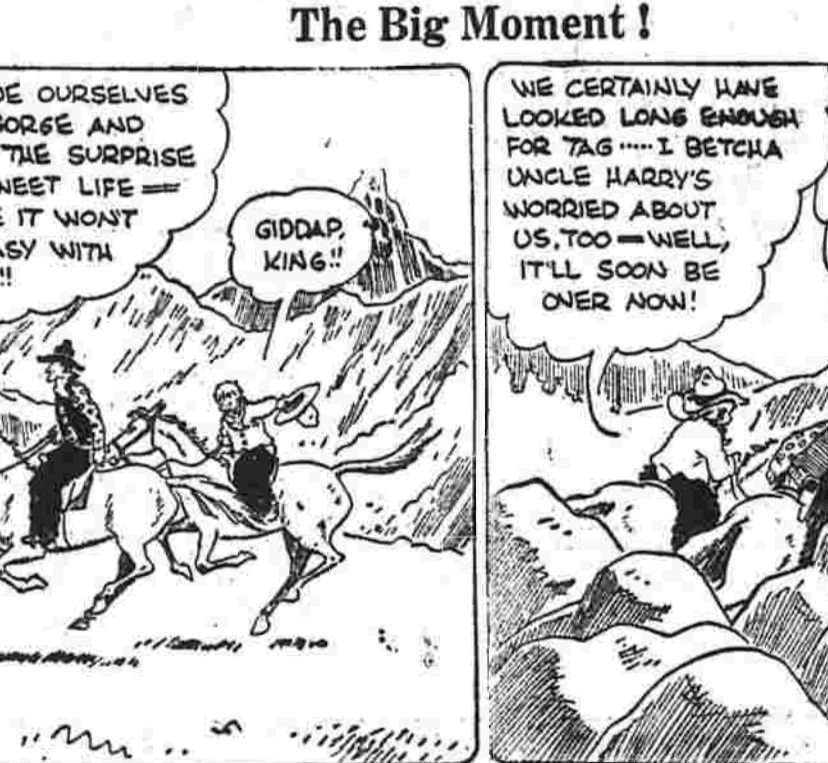
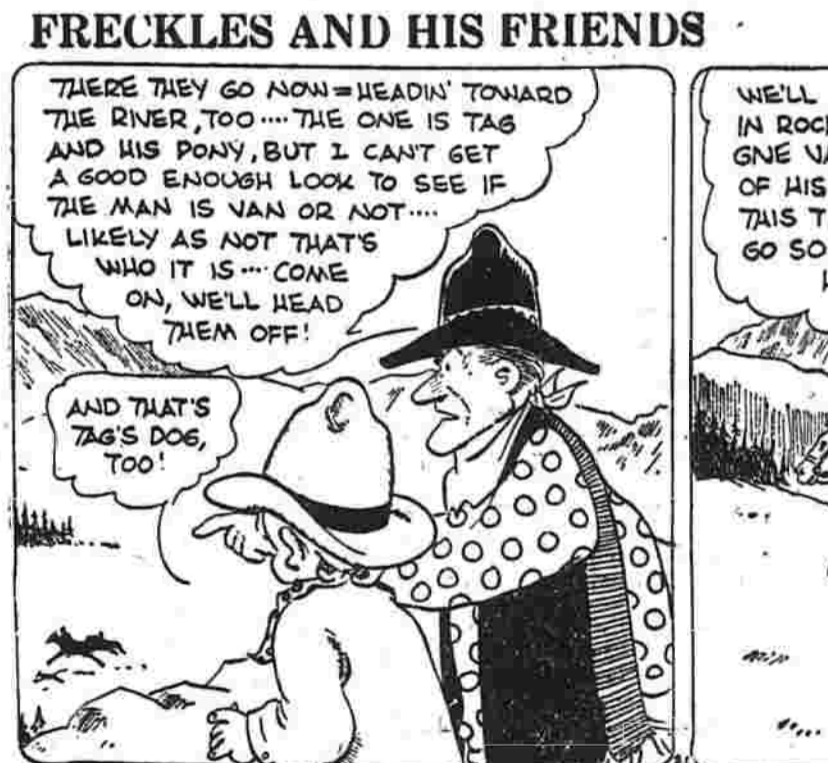
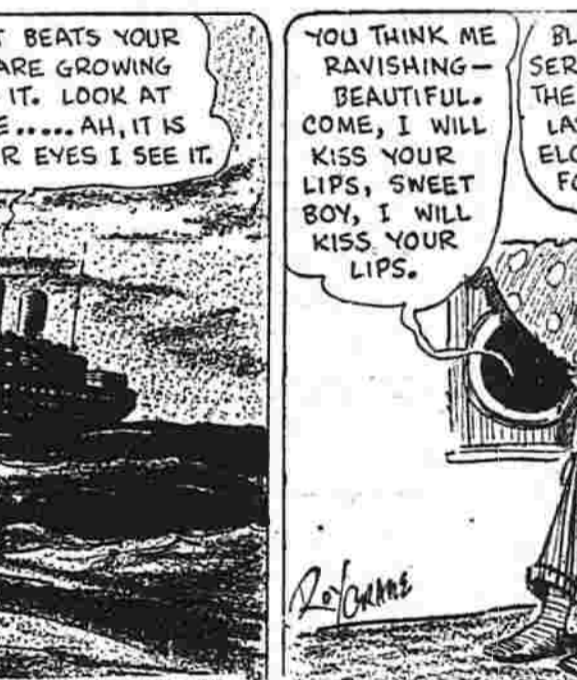
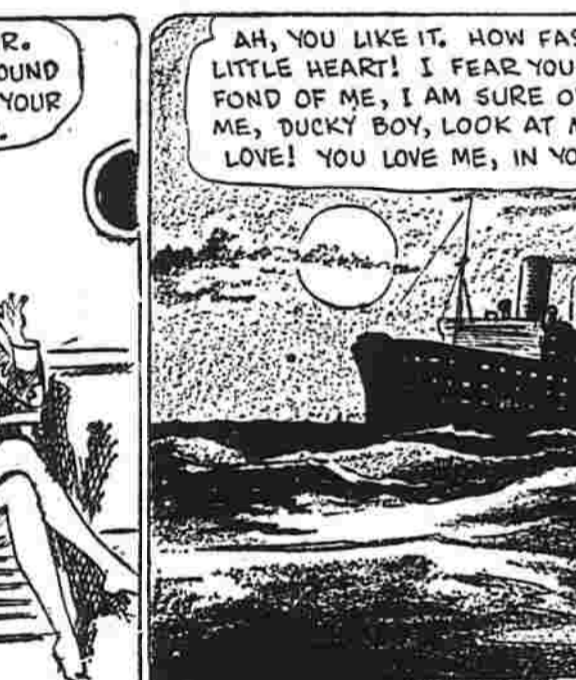
By Fontaine Fox



OUR BOARDING HOUSE By Gene Ahern



WASHINGTON TUBBS II Here Comes the Bride



TONIGHT
SEE THE SENSATIONAL
DAREDEVILS OF THE AIR
At the
AMERICAN LEGION
CARNIVAL
Dougherty Lot—Center St.
FREE AUTO PARKING

ABOUT TOWN
Pastor and Mrs. Weber have returned from Jersey City, N. J., where they attended the funeral services of Mrs. W. Santt, sister of Mrs. Weber.
Mrs. and Mrs. Thomas Walker of Russell street are spending a few days in Atlantic City.
All members of the athletic committee of the Luther League of the Swedish Lutheran Church are requested to meet at the church at 7 o'clock Monday evening to make plans for the outing at Crystal Lake. Those on the committee are Irving Carlson, Lawrence Anderson, Herbert Johnson, Mildred Berggren, Edna Johnson, and Margaret Johnson.
Enlight Lodge, No. 42, I. O. G. T. will meet in Orange Hall at 8 o'clock tonight. All members who have not as yet paid their quarterly dues are asked to be present to do so.
Miss Gladys Johnson and Miss Flora Thrall both of Strickland street leave today for Hampton Beach where they will spend a two weeks' vacation.
A surprise miscellaneous shower was tendered Miss Mildred White, who is to become the bride of Raymond Hennequin on July 23, at home on Autumn street. Miss White was the recipient of many beautiful and useful gifts. Dancing and games were the diversions of the evening, and refreshments were served at a late hour.
Mrs. Walter Donlittie entertained at bridge last evening at her home on Edward street in honor of her sister, Mrs. Patrick McGuire who with her husband and son have been spending two weeks with relatives in town. Miss McGuire won first prize and Miss Rose Tierney of Middletown, consolation. A dainty luncheon was served by the hostess.
James M. Shearer, manager of the Capitol-Buick company, will go to Boston Monday for the first showing to Buick dealers of the new 1930 models.
The Sunshine club of the Swedish Congregational church on Spruce street will have its annual outing at Hammonasset beach this afternoon, making the trip in private automobiles.
Mr. and Mrs. George F. Borst of Cambridge street left early this morning for a tour of New York state, with a visit to Niagara Falls and Canada in prospect before they return.
Judge William S. Hyde, Mrs. Hyde and their daughter Frances are expected home tomorrow from a two weeks' northern tour. After leaving their son Miss Catherine Camp in Holderness, N. H., they proceeded on to Nova Scotia and other provinces in Canada.
Manchester Kiwanians at their meeting Monday noon at the Country club, will be entertained by Clarence T. Hubbard, widely known as a magician. Member who cannot attend the luncheon are urged to dial 5540 or 7244 before 9 o'clock on Monday. The Hebrew camp for kiddies will open on Monday the 29th.
Mrs. Elizabeth McMaster, a past chief daughter of the Daughters of Scotia lodge in Framingham, Mass., has been visiting Mrs. Maud Torrance of Walnut street, and attended the banquet and meeting of Helen Davidson lodge last evening.
Mrs. Josephine H. Thibodeau of Clinton street will spend the next two weeks at Montreal and Farnham, Canada.
Mr. and Mrs. William Munroe of Biscow street will leave today by automobile for Atlantic City where they will spend a week.
Howard Smith, son of Mr. and Mrs. Ernest Smith of North School street is visiting with relatives in Scotland, Conn. Mrs. Smith received word yesterday that Mrs. Charles Bronson, formerly of this town, who is now living in Scotland, suffered a slight shock.
Arthur Starkweather and family of Starkweather street will spend the next two weeks at their cottage at Coventry Lake.

DANCING
EVERY WEDNESDAY AND SATURDAY NIGHT
At
LAKESIDE CASINO
PICNIC AND DANCE
Given by
S. L. A. LODGE, 207
SUNDAY, JULY 21, 1:30 P. M.
Chestnut Grove
Buckland, Conn.

ACCIDENT VICTIM'S INJURIES ARE ACUTE
Fractured Pelvic Bone Discovered in Addition to Serious Head Wound.
The condition of Miss Emma W. Borowski of 194 Fern street, well known Manchester school teacher, remains unchanged, it was stated today at the Memorial hospital where she was removed after an automobile accident at Wapping four corners early yesterday.
Miss Borowski spent an uncomfortable night, being in considerable pain. X-ray proofs are not yet available but it was learned that in addition to the severe head injury, there is also a possibility of a fracture of the pelvic bone. While her condition is not regarded as serious, hospital authorities intimated that it would be a month or two before Miss Borowski will be well enough to leave the hospital.
Miss Mary D. McDams of the 71 Ridge street, who was in the car with Miss Borowski and slightly injured, will be able to leave the hospital in a few days. Both are teachers in the Washington s. e. Whether Miss Borowski will be able to resume her duties when school convenes again early in September depends upon the speed of her recovery.

MANCHESTER INTERESTED IN MOTOR BOAT FIGHT
Lake Pocotopaug Cottagers Object to Several Different Features of the New Boats.
Manchester is taking a deep interest in the battle which is being waged against the reckless operating of power boats at Lake Pocotopaug in East Hampton. A number of local people own cottages there and scores of others motor there weekends. Cottage owners claim that a large amount of the enjoyment they derive at the lake has been destroyed by the intrusion of the motor boats. One of the main faults found is that they make so much noise late at night that people living in the cottages are unable to sleep.
Other faults found are that the boats spoil the lake for bathing by spreading oil on top of the water and that the noise and speed with which the boats travel has scared the fish until this sport is the worst it has been in years. There used to be only a few motor boats on the lake but now two large ones have been added for commercial purposes.
Lieutenant Clifford Gorgas of the State Police Barracks in Hartford has been assigned to the situation with orders to arrest any pilots guilty of reckless driving. Numerous complaints have come to the state police that canoes have been upset and even the lives of bathers endangered by the power boats.
A state statute passed by the 1923 general assembly prohibits the reckless operation of power boats on inland waters. Persons violating this law are liable to both fine and imprisonment. No arrests have been made as yet but Lt. Gorgas has gone to East Hampton to make a personal investigation of conditions.

LOCAL WOMEN ATTEND AVERY ANNIVERSARY
Mrs. George H. Waddell and her cousin, Miss Gertrude Albiston, are local members of the Avery Memorial association which held its thirty-fifth annual meeting yesterday at Groton, on the anniversary of the burning of the old Avery house in July 1894, or originally built in 1655 and later moved across the river from New London to Groton where it stood for two centuries. Daughters of the Revolution had plates made bearing a picture of the historic old house. The Avery were the first settlers of Groton, and the maternal grandfathers of Mrs. Waddell and Miss Albiston, was Ichabod Avery. The Avery ancestor of John D. Rockefeller and of the late Governor Morgan of New York lived in the old Avery house.

RICH HOME "BURGLARS" ONLY MISCHIEVOUS BOYS
Youngsters Break Into East Center Street House and Use It for Private Gymnasium.
Police Lieutenant William Barron, of the Manchester police department, said today that a break at the old Rich Homestead on East Center street, the news of which had been withheld a week during investigation, has been attributed to boys.
Entrance to the unoccupied house which was the home of the late George F. Rich, father of Richard E. Rich, well known real estate dealer, was made through the kitchen windows in the rear of the building. These have since been barricaded. Although first reports were that silverware had been stolen, this was denied today by Mr. Rich.
It seems that a group of boys entered the house and used it as a sort of gymnasium for acrobatic stunts.

all
ALL the butchers . . .
ALL the bakers . . .
ALL the candlestick makers and ALL of every other trade, business, and profession are included in the New Yellow Pages . . .
For Reference—
look in the
CLASSIFIED TELEPHONE DIRECTORY

it
when a careful driver runs down a pedestrian. But tougher still if he has no liability insurance.
More and more car owners are buying it on the installment payment plan.
Send or phone for a booklet explaining this plan now.
JOHN H. LAPPEN
Insurance of All Kinds.
19 Lilac St., South Manchester
Telephone 7021

TOUGH LUCK
when a careful driver runs down a pedestrian. But tougher still if he has no liability insurance.
More and more car owners are buying it on the installment payment plan.
Send or phone for a booklet explaining this plan now.
JOHN H. LAPPEN
Insurance of All Kinds.
19 Lilac St., South Manchester
Telephone 7021

BRAINS BEAT BRAIN IN BIRD WORLD, TOO
Wrens know their onions, too.
Joseph W. Conrow, of 382 Main street, says he witnessed a strange sight this week. A birdhouse had been built for wrens but the entrance had been made too large. Other birds would be attracted to it if they attempted to enter. A part of the mesh was enlarged just big enough for a wren to slip through.

McCORMICK BASS LOOKS LIKE ALL SEASON CHAMP
Catches 5 3-4 Pound Beauty at Lake Pocotopaug—Leads Local Sportsmen in Bass Club.
If power boats are guilty of scaring away the fish in Lake Pocotopaug at East Hampton, then the largest small-mouthed bass catch of the season made by Fred J. McCormick, of 226 School street must have been deaf and dumb. However, at least it retained its sense of smell and sight, for nothing frightened it away from a tasty little frog which McCormick dangled on a hook.
Freddy knew he had a big one when he started hauling it in and it was at least 15 minutes before he had the bass tined out sufficiently to advise netting. Taken from the water and brought back to the headquarters of the Manchester Bass Club at the Center Auto Supply Station on Center street, the fish tipped the scales at five and three-quarters pounds.
This catch was easily the best of the season and according to veteran fishermen will undoubtedly stand as the best of the season. It is seldom that a small mouthed bass weighing over five pounds is caught in the waters hereabouts. The heaviest one on record previously at the Bass Club weighed two pounds less.
There are two bass clubs in Manchester at present. The other is conducted by J. P. Ledgard, veteran north end sportsman. It has a membership of 36 persons and while only two fish have been registered there, one of them is the second largest on record in Manchester this season. That one was 21 inches long that tipped the scales at four and three-quarters pounds. It was caught by Herman Muske, local policeman, at the second pond in Bolton Tuesday. The other was one weighing three and three-quarters pounds which was 18 inches long. This was taken by a former member of the police department, Clarence Wilson. Both

SUNDAY DINNER
at the
HOTEL SHERIDAN
Turkey, Duck or Chicken
with all the fixings \$1

Home Sites in CLEARVIEW
Build a home in this beautiful, restricted tract. Small down payment. Terms on Balance. Improvements in front of all lots.
Arthur A. Knofla, Agent
Tel. 5440 or 5938. 875 Main Street.
"Clearview is located half way between Main Street and Manchester Green."

THE IMPROVED GOODYEAR PATHFINDERS ARE SELLING FAST AT THESE PRICES

HIGH PRESSURE		BALLOONS	
30x3 1/2 Cl.	\$5.40	29x4.40	\$6.60
30x3 1/2 Cl. O. S.	\$5.85	30x4.50	\$7.35
31x4 SS.	\$9.90	29x4.75	\$8.75
32x4 SS.	\$10.55	30x4.75	\$9.10
32x4 1/2 SS.	\$14.30	30x5.00	\$3.35
30x5 H. D.	\$23.45	30x5.25	\$10.90
33x5 H. D.	\$25.90	31x5.25	\$11.20
32x6 H. D.	\$35.55	32x6.00	\$13.15
36x6 H. D.	\$39.45	33x6.00	\$13.55

Now Is The Time To Have Your Car Inspected
Especially
Grease, Oil, Brakes Tested
We also have a special device for flushing out Radiators. Guaranteed not to heat up after operation.
Only Three Days. Get Yours Now.
GASOLINE
GREASE
OILS
Campbell's Filling Station
DIAL 7114
Main and Middle Turnpike
SERVICE

WATKINS BROTHERS, Inc.
Funeral Directors
ESTABLISHED 54 YEARS
CHAPEL AT 11 OAK ST.
Robert K. Anderson
Funeral Director
Phones: 5171, 7068, 7425

Keeping Valuables under Mattresses is Risky
there's a better way
NEWSPAPER item: "THIEVES GET \$1700 LOOT. Yesterday burglars broke into the home of G—W—, 1310 Westland Terrace, and stole jewels valued at \$500 and securities worth \$1200, which had been hidden in a mattress. Police were unable to find clues." But here's an item you DON'T see: "Burglars enter Manchester Trust Co. Safe Deposit Vault." No, it simply isn't done—because it can't be. Transfer your valuables to our vault immediately.

THE MANCHESTER TRUST CO.
SOUTH MANCHESTER, CONN.

COLE MOTOR SALES
FISK ALL CORD TIRES
Every Tire a Genuine First Grade Product—Guaranteed 20,000 miles.
HERE'S BIG VALUE

27x4.40 .. \$ 7.00	31x6.00 \$13.90
29x4.40 \$ 7.40	32x6.00 \$14.35
30x4.50 \$ 8.25	33x6.00 \$14.80
28x4.75 \$ 9.15	34x6.00 \$15.30
29x4.75 \$ 9.55	30x6.50 \$16.65
30x4.75 \$ 9.95	31x6.50 \$17.05
32x4.95 \$12.25	32x6.50 \$17.40
29x5.00 \$ 9.90	33x6.50 \$17.80
30x5.00 \$10.20	30x6.75 \$17.40
31x5.00 \$10.65	32x6.75 \$21.95
32x5.00 \$11.75	33x6.75 \$22.70
28x5.25 \$11.10	30x3 1/2 \$ 6.05
29x5.25 \$11.55	31x4 \$10.80
30x5.25 \$11.90	32x4 \$11.50
31x5.25 \$12.25	33x4 \$12.10
28x5.50 \$12.30	32x4 1/2 \$15.55
29x5.50 \$12.65	33x4 1/2 \$16.20
30x5.50 \$12.90	34x4 1/2 \$16.70
30x6.00 \$13.55	33x5 \$21.15

SERVICE
We mount, dismount and change your tires around to suit your free of charge.

A POSITIVE FACT
We challenge anyone to duplicate the values plus our service on the tires and tubes listed above.

COLE MOTOR SALES
WILLYS KNIGHT AND WHIPPET MOTOR CARS.